

Gedling Country Park Wildlife Walk—4th January 2020



For a dull mid-winter day, 16 of us formed a good turn-out. Apart from a few of our more common birds, we expected to see very little, but making it a local mycological study produced some interesting fungal finds. Helen, a regular, informed us about the new trees that the Friends

have been introducing. All our British tree species are now represented on the Park.

As silver birch is a common tree here, it's not surprising that birch wood wart is a frequent find on decaying



Mark with birch branch and fungus

trunks. (So maybe I can expect to see it soon...)



Helen talks to us about new trees



Into the woods

Into the woods beside Spring Lane to find some fungi and perhaps a few insects? Yes— a common earwig on a twig, followed by this inoffensive garden cross spider, both well-spotted in murky undergrowth. But not many fungi. The view round the south-west bend gave us



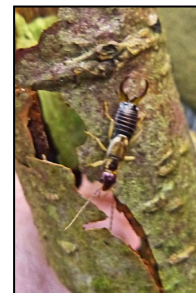
Close-up birch wood wart



some crows, followed by a kestrel hovering. Passing the well-manicured reed pond, Helen pointed out another new tree, but we



were unsure of its name. Then just off the zig-zag path, Mark held out a



Earwig



Garden cross spider

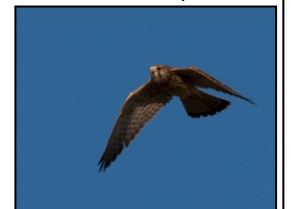


Pixie cup fungus



Deer fungus

small sample of pixie-cup fungus, only to find a much larger patch on the ground nearby. This tiny fungus is well-named, very delicate—and easily missed. The deer fungus here looks similar at first glance, but grows in much larger colonies and feeds deer - not pixies.



Kestrel hovers

Those interested in these wildlife walks (and those too who have not yet joined us) may like to know that on the Friends of Gedling Country Park's web-site, most of 2019's walk write-ups can now be seen under 'Wildlife'. This one will follow soon. What we see under Mark's knowledgeable guidance in the warmer months is quite spectacular. See details of future walks in Notts Guided Walks Programme in libraries, information centres etc. from March, or on the web-site now at

<https://nottsguidedwalks.co.uk>

Brian Cluff